



VOLUNTEERS GUIDE



CONTENTS

	Page
From the Vision Team	1
Easter Camp Vision	2
EC 23 Theme	3
About Camp	4
Who Heads up Camp	4
Contact Details	4
Organisation Structure	5
During Camp	6
Camping Onsite	6
Gear List	6
Key Info	7
Attitude of camp	10
Health and Safety	11
Final Thoughts	12



FROM THE VISION TEAM

Kia ora,

We are so grateful that you have said 'yes' to serving at Easter Camp. You are an absolutely crucial part of who we are and there are not enough words to thank you enough. We want camp to be an incredible experience for you - so please know we are here for you.

Your Area Head is the person to go to if you have any questions, otherwise Jocelyn, our wonderful administrator and Blair, our Senior Operations leader, are happy to help as well.

Lives will be transformed by God at camp- and you play a significant role in this. We look forward to seeing you at camp - come and say 'hi'!

Blessings and aroha
The Easter Camp Vision Team

Damon Fitzpatrick (Director), Andy Beales-White, Glen Molloy, Karen Molloy, Troy Stewart, Matt Swank, Mike Warring, Jocelyn Smith

EASTER CAMP VISION

Our vision is summed up in three words,
yet the significance of them is mighty.

CONNECT

"Central Easter Camp is about helping young people connect with God." This acknowledges that it is a partnership between youth ministries who bring their young people along, and Easter Camp. That together we may see young people connect and meet with God in a potentially powerful and life changing way.

STRENGTHEN

"Central Easter Camp is about strengthening youth ministries in the lower north island." We take care of the program, the food, the speakers, the music - everything like that, to ensure youth leaders can spend the whole weekend focusing on building relationships with their young people and nurturing that sense of community within their group. Also, by proactively creating the dynamic of a 'small camp within the context of the big camp', it means no matter how big Easter Camp gets, your young people don't get lost in the crowd.

IMPACT

"Central Easter Camp is about impacting the regions of the Lower North Island." We draw youth groups from Hawkes Bay, Manawatu, Taranaki, Wairarapa and Wellington. It is our prayer and hope that Easter Camp encourages and inspires youth groups to impact their local, regional, and global communities with a missional understanding of what it is to go and be the hands and feet of Jesus. As the church owns this great commission, the impact will be huge and Easter Camp has the potential to be a fantastic vehicle that helps encourage our young people to reflect Jesus in all that they do.

EC23 THEME

Early in 2022 the EC vision team started a prayerful journey towards discovering what we believed God was laying on our hearts as a theme for EC23.

WHAKAPIRIPIRI MAI — EASTER CAMP '23 COME TOGETHER

THEME

Reflecting on the past few years and how the events of COVID have changed the way we have met, the theme for this year's Camp is Whakapiripiri Mai - Come Together.

There are many examples throughout the Bible of communities of God being scattered, and then coming back together again to be united under Him, only to be sent out again full of renewed faith.

With no camps in 2020 and 2022, we have had longer periods of being disconnected as a community. We feel that now is the time to create a sense of coming back together to celebrate the freedom to gather and to remember together what Jesus did on the cross.

We will structure the weekend around the different ways that we can gather together:

- Gather in group
- In village
- As a whole

It is our desire to create space for groups to grow in their unique identity together and to also find their space and belong within the larger community of EC.

It is in coming together that we can begin to see the gifts and movements of different parts of the body and to celebrate that even though we are all different we are also all one in Christ. In coming together, we can find a refreshed faith and encouragement from one another before we scatter once again.

BIBLE VERSES

1 Corinthians 12:27 - "All of you together are Christ's body, and each of you is a part of it."

John 15 - Abide in me - the vine and the branches - there's life when we're joined together.

The Lord's supper - **1 Corinthians 11:20**

συνάγω - Gather Assemble

Matt 18:20 - where 2 or 3 are gathered together

Matt 22:10 - Wedding Feast gathering the least of these

Acts 4:31 - Pentecost Gathered filled with the Holy Spirit

συνέρχομαι - Come Together

Luke 5:15 - Gathered to hear Jesus and be cured of their diseases

Acts 5:16 - A great number of people gather from the towns around Jerusalem, they would bring the sick and those tormented by unclean spirits and they were all cured.

ABOUT CAMP

WHO HEADS UP CAMP

Central Easter Camp is organised and run by many volunteers with the support of the Lower North Island Baptist Association. We are birthed out of the Baptist church family but firmly believe that Central Easter Camp is a Kingdom resource to be shared regardless of denomination; all are welcome.

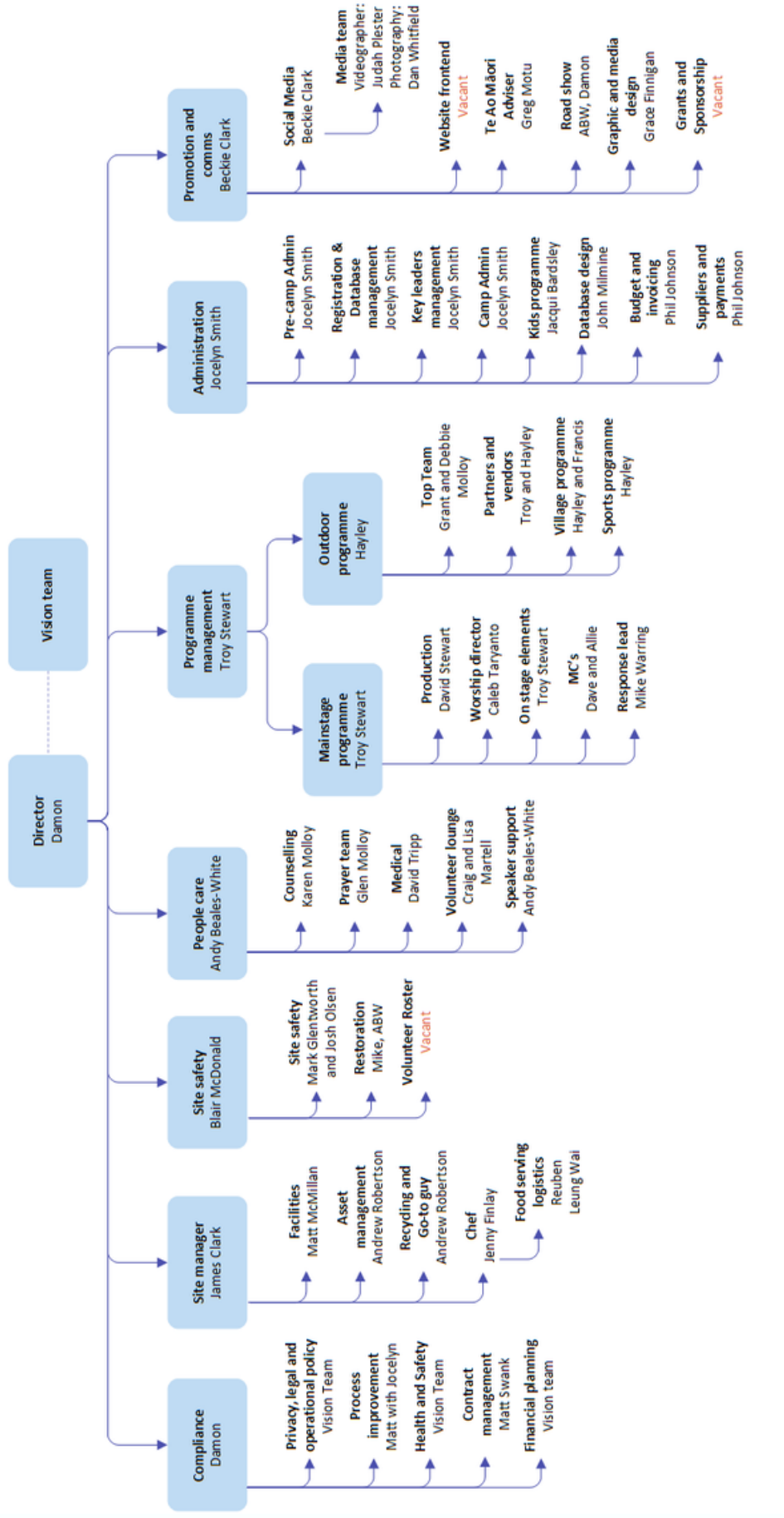
The vision team sets vision, direction and spiritual oversight. For a breakdown on all area head rolls, see the next page.

EASTER CAMP CONTACT DETAILS

Admin: Jocelyn Smith
Email: admin@ec.org.nz
Phone: 027 645 8872

Web: www.ec.org.nz
Instagram: [#centralec](https://www.instagram.com/centralec)
Facebook: Central Easter Camp

ORGANISATION STRUCTURE



DURING CAMP

CAMPING ONSITE



If you are one of the lucky ones staying onsite with us, you have a couple of options:

- Join your church youth group at their site. We really want to encourage you to hang out with your young people and link into their community. There is no easier way to get the vibe of camp and get to know your young people than by staying with them.

- If your church is not at camp or you would rather have a bit more 'peace and quiet' that's OK too. We have set up a dedicated volunteers camping area which is located at the far edge of camp out of everyone's way and includes a shower block (Camp Reception will guide you to where this is located).
- If you have a caravan or motorhome, these are welcome too and we have a special location set aside.

You can either setup your site from 5pm on the Thursday night of camp or if you wish to set up before camp starts, you can do so as follows;

- 1.30pm and 9pm Wednesday 5 April
- 9am and 2.30pm Thursday 6 April

If you are doing this then please email admin@ec.org.nz to let us know when to expect you. Also please note that you can not stay overnight on Wednesday.

Suggested gear list

For those volunteers staying on-site at camp you will need to provide your own camping equipment. The suggested items you may need are:

- Tent or caravan (let us know if you are bringing a caravan)
- Stretcher, airbed or mattress
- Sleeping bag, blankets or duvet (it is winter and can get very cold)
- Torch
- Usual toiletries, medication etc
- A towel (showers are available at several locations around camp)
- Drinking container
- Warm clothing
- Pen and paper

DURING CAMP

HOURS OF CAMP



Central Easter Camp has their gates open at 5pm Thursday 6 April. The Camp finishes on Monday 10 April, at approx. 1.30pm. Breakfast is at 8am each morning, lunch is 12.30pm and dinner 5.45pm each night. The Village shuts down 11.30pm each night with Camp shutting down at 12am.

VEHICLES AND PARKING



Vehicles/transport for volunteers to camp is not provided, all volunteers will need to arrange their own way to and from camp. A good start is to talk to your church Pastor as they may be able to assist. Parking of private vehicles is within a car park situated within the camp grounds (adjacent to Manfeild Park Stadium and Reception). This is a secure area which is monitored by our Site Safety Team.

CHECKING IN



On arrival at Manfeild Park, Site Security crew (who control all people entering and exiting camp), will direct you to Camp Reception.

SPECIAL DIETARY NEEDS



Central Easter Camp caters for Vegetarian and Gluten Free options outside of the main camp menu. If you have other dietary requirements, camp will be providing chiller and freezer space, and a separate area for meals to be heated with microwaves available. You will need to bring your own named meals which can be stored in the allocated chiller and freezer space. When you arrive at camp, ask at reception to direct you to the chiller and freezer space.

If you have special dietary need outside of Vegetarian and Gluten Free, then please email the Admin Team by 24 March to admin@ec.org.nz for our records.

VOLUNTEER LOUNGE



Easter Camp has a dedicated Volunteer's Lounge. This is somewhere you can go to hang out and have some quiet time. The area is open during the day and evenings and has pastoral care services if needed. There is also free tea/coffee/milo and often some yummy baking.

The Volunteer's Lounge is located upstairs in the Main Stadium building.

LOST PROPERTY



A lost property box is kept at Camp Reception in the main stadium. After camp, all lost property will be donated to a local charity if not collected. Name everything!

PROGRAMME



Copies of the programme will be posted around the campsite. Due to the nature of the event, all programme elements are subject to change. Back again, we have Top Team, Talent Quest (of course!) and great nightlife lined up throughout the weekend as well as the sports comps and other day time activities.

PROMOTIONAL MATERIAL



Under no circumstances is anyone allowed to hand out material, promote or advertise material in any way at Central Easter Camp without written permission from the Easter Camp Vision Team. If anyone is seen doing this (including Artists & Bands), they should be stopped and reported to Camp Site Safety or Reception. There is an exception for Key Strategic Partners of the Camp but only within their allotted area within Village and only with permission from the Easter Camp Director.

The same applies to any request for comment to the media. All requests must be referred to the Camp Director in the first instance.

WRISTBANDS



Wristbands are a vital part of ensuring the safety of legitimate campers. Every camper and volunteer must wear a wristband at all times.

Always check the armband of a person you are speaking with as this will help you to know if they are a young person or a leader.

Spot checks for wristbands may be made at any time – particularly at mealtimes. People not wearing their wristband may be escorted from the site until the youth leader can be located to identify the person. If there is any reasonable doubt, the person will be sent home at his or her own expense. It's certainly a zero- tolerance policy for unregistered campers and late night 'visitors'.

RESPONSIBILITIES

All crew are directly responsible to their Area Head and ultimately to the Camp Vision Team. If crew have any problems or questions, they should talk to their Area Head immediately. It is very important that all crew respect those in areas of responsibility. Each Area Head is directly responsible to the leadership of Easter Camp.

HOURS OF WORK

In coming to Central Easter Camp as Camp Crew with the reduced camp fee rate, there is an expectation that you will be rostered on for duties across 8 hours each day. If you feel you are working too hard, please speak immediately to your Area Head or Supervisor.

We recognize that fatigue from the activities undertaken will occur and work should be completed within the following guidelines:

- Make sure there are sufficient breaks after periods of intense physical and mental activity
- Ensure you take sufficient time off work to recover
- Use your recovery time wisely i.e. sleep
- Know your limitations and do not exceed them
- Maintain your fluid levels (water is best)

"WE ARE HERE TO SERVE"

The attitude of the Easter Camp Crew is immensely important. Each crew person should interact with Easter Camp Campers in a courteous and professional manner, regardless of the circumstances. And remember Easter Camp is all about helping young people Connect with God, Strengthening local Youth Ministries and Impacting regions for the Kingdom. You are a part of that through the role you play over the Easter Weekend in making it all happen.

To assist you in your duties here are some guidelines of how to deal with people. These were written for the Site Security Team, however apply to all of us. We know most of this will come naturally, but it is good to have a friendly reminder.

- Treat people the way you would expect to be treated yourself in the same circumstances. This is our # 1 rule.
- Love one another. A simple instruction from the bible, but on occasion can be really hard to do (but we must try).
- Where ever possible, females deal with females and males deal with males. Save yourself from allegations at a later date. It is also easier for the youth to be honest with their peers. For this reason we will also be working in pairs whilst on duty, never alone.
- A great place to start when dealing with a young person is to locate their key leader and get them involved.
- If unsure call your Area Head. If they are not available, the Site Safety Area Head, Blair Macdonald, is available 24/7 and reception or one of his team can contact him for you.
- Never enter one of the campers tents, again if there is an issue, locate the key leader responsible for the young person.
- Don't touch other people's property. Instead of searching someone's property, ask them to show you. We have no legal authority to search people's property.

UNACCEPTABLE ACTIVITIES

- Smoking: No smoking is permitted while working on shifts as a crew member. Smoking is also prohibited at all times in indoor venues and tents. There will be a designated smoking area at camp.
- Use or possession of illegal drugs, alcohol, party pills
- Any illegal behaviour
- Discrimination/Harassment: The Easter Camp Team will not tolerate discrimination based on race, religion, or gender.
- Swearing or profane language
- Unauthorised persons on site
- Campers leaving site without permission
- Mixed gender in same tent (apart from married couples)

HEALTH & SAFETY



As you would expect, Health and Safety is a major focus within something like Easter Camp. Each area of camp has its own H&S procedures and operational documentation specific to the potential hazards of that area. Again, your Area Head is your first point of contact with anything to do with H&S.

Separate to policy and procedure, there is an understanding that health and safety at Central Easter Camp is everyone's responsibility. If you have any H&S concerns, the first port of call is your Area Head for resolution.

Before 5pm Thursday 6 April, the site is considered a worksite. As such anyone onsite while Manfeild is deemed a worksite, needs to comply with basic H&S. This would include:

- All Camp Crew will take part in an Induction on site organised and led by Easter Camp Management. The standards covered in the induction should be relayed to all late-comers and teams. Team leaders are responsible for making sure this happens after the induction.
- All Camp Crew will be clearly identifiable by wearing high visibility vests and then hard hats where required.
- All Camp Crew will wear enclosed shoes, or safety shoes if required.
- There will be a hazard board that identifies all restricted areas during worksite timeframes. Pay attention and adhere to all warning signs and barriers around site.
- Driving on site should be limited and restricted to only what's necessary.
- Site speed limit is 15km/h.
- Users of the golf cart must be trained and hold a current car/bike licenced.
- Trailers will not be used for moving people.
- All site traffic and people will enter through one gate.
- No children are permitted on site during worksite timeframes or inside the restricted zones.
- All lifting, shifting and hoisting machinery will be used only by competent users and according to contractor's standards.
- Where a harness is required it must be worn and needs to be within its lifespan.
- The grandstand buildings are off limits.
- Pedestrians have right of way at all times on the Manfeild Site.
- Dogs are not permitted onsite.
- Abide by any instructions given out by Manfeild staff.

Camp will revert back to a worksite on the Monday in a staggered format. Starting with Mainstage area at 12pm, Village at 1.30pm, Campsite at 2pm. Above rules will then apply.

FIRST AID



First Aid will be available for the duration of Camp. We have a great team of doctors and nurses and other health professionals on site located in the main stadium by camp reception. Prepare for your shifts by drinking plenty of fluids and taking a water bottle with you. Apply suntan lotion when needed.



There are no longer restrictions on events however we still hope that Covid-19 will stay away and to do our part in this we'll;

- Practice good hygiene by washing and sanitising hands regularly.
- Sneeze or cough into your elbow.
- Do not attend Easter Camp if you are feeling unwell.
- If you begin to experience Covid-19 symptoms, don't worry, our medical centre at Easter Camp will have health professionals available 24/7 to assess.

FEEDBACK

Easter camp is around 45 individual youth groups getting together this year and we just organise it! We'd like to encourage all Volunteers to give us feedback on Easter Camp - write to us at admin@ec.org.nz

FINAL THOUGHT

Have fun out there, get to enjoy camp and all it has to offer our young people. Mix and mingle with the youth and leaders. Take the opportunity to build relationships with the young people from your church community.

The whole Easter Camp team thanks you for being willing to give up some (or all) of your Easter Holiday to help make camp happen. Trust us when we say your efforts hugely contribute to the success of camp and allow God to do amazing things in the lives of our young people.

We are so much looking forward to having you at camp!

Manaakitia Koe
The Easter Camp Vision Team

[illegible]